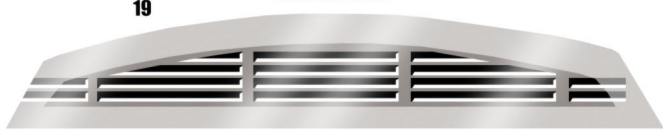


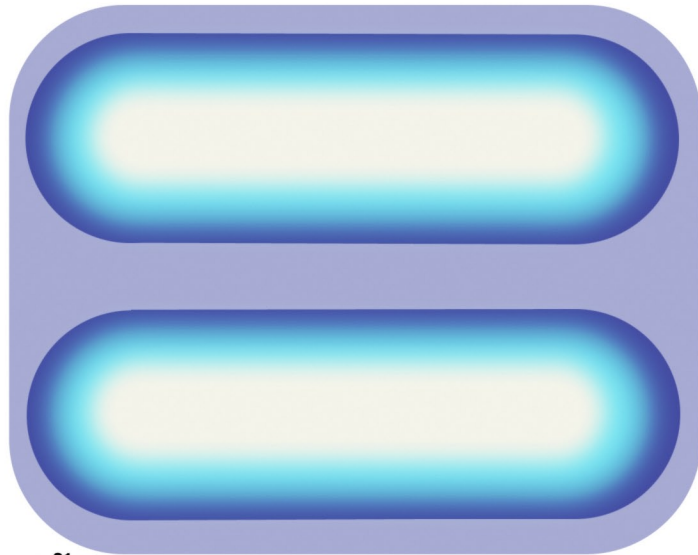
19

NOSE EXTERIOR

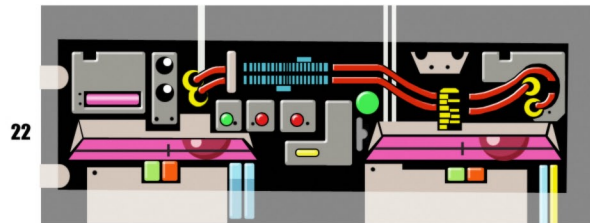


20

REAR ENGINES



21

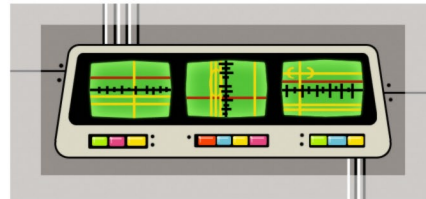


INSIDE CANOPY

22



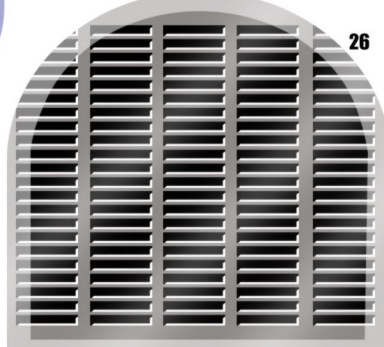
BULWARK



24

INTERIOR SCREWS

25



CENTRAL FUSELAGE TOP

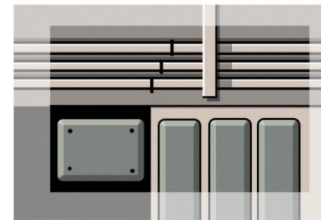
26

23

INSIDE REMOVABLE SIDE HATCH

toy-polloi

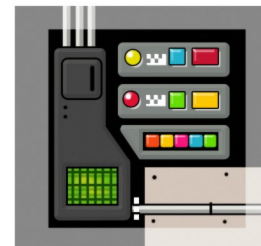
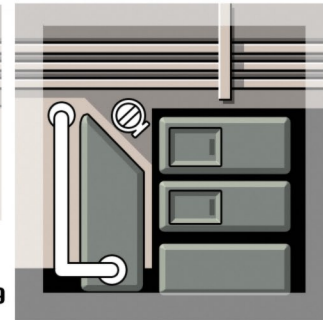
27



28

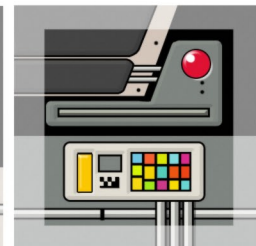
BACK WALL, LOWER

29



30

BACK WALL, UPPER



31